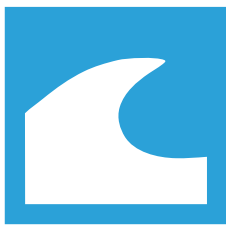


## PORTABLE SIMULATOR

Portable Simulator is a great solution for customers that want to have the maximum visuals and training capabilities in a small and easily transportable box. The box is outfitted with the maritime training solution NAUTIS.





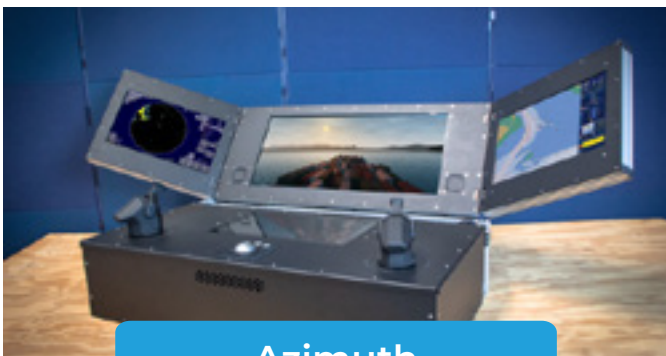
## Portable Simulator

We help maritime organizations enable learning by simulation with Portable Simulator. The Portable Simulator is equipped with a radar, ECDIS, 1 outside view and conning panel.

There are two types of Portable Simulator that customers can choose from depending on our customers' training needs: Azimuth and Conventional.

## Core benefits

- **Portability:** While traditional simulators require the trainee/trainer at the facility, our simulator will come to you.
- **Convenience:** Compact and quick to set-up solution that fits in the trunk of your vehicle.
- **Cost-effectiveness:** Send the simulator without an instructor and save travel costs & overhead time.

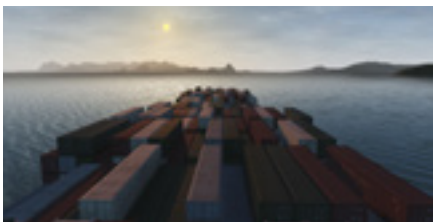


Azimuth



Conventional

Despite the portability of the simulator, we managed to preserve the quality of the visuals and comprehensive functionality the NAUTIS maritime software offers.



## Characteristics

### Performance that won't fail you

- Intel Core i7 8-Core
- NVIDIA GeForce RTX 3070
- 32 GB DDR4 RAM
- 256 GB SSD Storage

### Robust hardware you can rely on

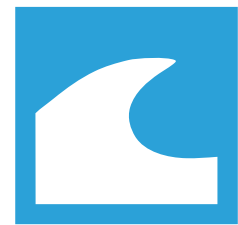
- Smart Ship Haptic Feedback controls (Azimuth and/or Conventional thruster/lever)
- Trackball including mouse buttons

### Displays for highly realistic visuals

- 34" inch ultrawide screen display for NAUTIS Outside View
- Collapsible 15" inch display for IN/RADAR
- Collapsible 15" inch display for ECDIS
- Touchscreen for Conning Panel 15"

### Connectivity to help you scale

- 2 HDMI connections for additional external display views
- WiFi & Bluetooth for wireless control of the haptic controls
- Connectivity with a portable instructor station



	Portable	Desktop	Class B	Class A
Navigation	■	■	■	■
Towage	■	■	■	■
Inland	■	■	■	■
Naval	■	■	■	■
Offshore/DP		■	■	■
Fishing			■	■

## Training needs

### Full supported model courses

- 1.07
- 1.27
- 1.26

### Partially Supported model courses

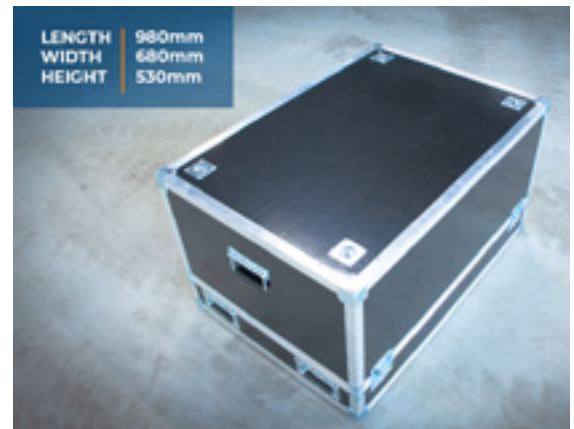
- 1.34
- 7.01
- 7.03

### Training goals:

- Advanced Azimuth Tug handling & manoeuvring
- Radar/ARPA Model Course 1.07
- ECDIS Model Course 1.27

## Dimensions

- Length: 980mm
- Width: 680mm
- Height: 530 mm



## Problems we solve

### 1. Remove boundaries of physical distance

Portable Haptic Simulator was created to solve the major problem: training beyond physical boundaries. It takes only three minutes to set up a simulator from scratch and start training.

### 2. Get acquainted with simulation

Portable Simulator offers a low threshold for organizations to try out simulation. Then they can assess whether it fits their training needs.

### 3. Improve training schedule

The Portable Simulator can be easily moved around, immediately after one group of students finished training on it, another group can start. This decreases delays and makes the training schedule more efficient.





## ABOUT

NAUTIS is a product of VSTEP, an ISO9001:2015 certified company based in Rotterdam, the Netherlands. We strive to enable learning by simulation with innovative solutions and aim to ensure that at least one-third of the maritime industry has obtained their skills through our simulation technology.



Ministry of Defence

